




PRODUCT GUIDE

CLEANROOM SOLUTIONS CATALOG



 customerservice@thomassci.com

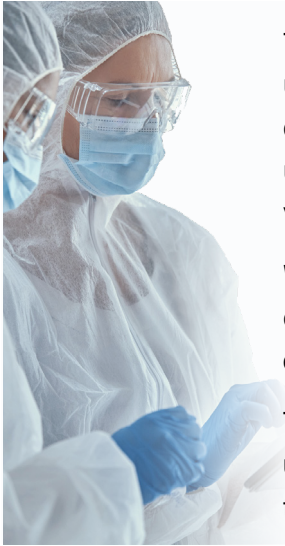
 833.544.7447

 thomassci.com

XTRACLEAN[®]
CLEANROOM ESSENTIALS

CE-Force[®]
powered by Thomas Scientific

M1
TECHNOLOGY



Thomas Scientific's cleanroom product guide features the most utilized cleanroom solutions used in a wide variety of controlled environment (CE) applications from our CE-Force, XtraClean and M1 Brands. These exceptionally crafted products are produced in ISO 9001 Certified Manufacturing Facilities, clean packaged and tested to maintain the highest levels of quality for your most critical environments.

With over a million product solutions and the largest cleanroom portfolio in the market, our team of Controlled Environment Specialists will find the right fit for you. Set up a free consultation with our experts today through your Thomas Scientific Sales Representative.

Thomas Scientific is committed to the development and expansion of its CE portfolio. New product designs are in development. Looking for a custom solution? Reach out today! We are here to build solutions together!

Table of Contents

CE CAPABILITIES – Page 3

Controlled Environment Solutions Pages 3-4

APPAREL – Page 5

Lab Coats & Coveralls Pages 6–7
 Apparel Sizing Chart Page 7
 Frocks, Coveralls & Sleeves Pages 8–10
 Bouffant Caps & Beard Covers Page 11
 Hoods Page 12
 Face Masks Page 13
 Shoe Covers Pages 14–17
 Boot Covers Page 17
 Cleanroom Gloves Page 18

WIPERS – Page 19

Dry Wipers Pages 20–22
 PreSat Wipers Page 23

MOPS – Page 24

Cleanroom Mops Page 25

FLOOR MATS – Page 26

Floor Mats & Frames Page 27

STATIONERY – Page 28

Paper, Clipboards, Markers,
 Notebooks, Binders Pages 29–32

CLEAN PACKAGING – Page 33

LDPE Bags & Tubing Pages 34–35
 Anti-static Bags & Tubing Page 36
 Nylon Bags & Tubing Page 37

CLEANROOM ACCESSORIES – Page 38

Backpacks, Badge ID Holders Page 39



Controlled Environment Solutions



We are your most trusted partner in Science & Controlled Environments

Why Thomas Controlled Environments?

Thomas Scientific focuses on delivering comprehensive solutions and support to customers with controlled environments (cleanroom) in advance technology markets, emphasizing technical expertise, diverse product offerings, reliable service, and supply chain optimization. Visit [ThomasSci.com/Controlled-Environments](https://www.thomassci.com/Controlled-Environments) to sign up for a complimentary consultation with a Thomas Cleanroom Solutions Specialist.



Controlled Environments & Cleanroom Solutions Specialists

A team of controlled environment experts dedicated to providing you with products and service solutions for all your manufacturing requirements for cleanrooms and controlled environments, in markets such as biopharma and advanced technologies.



Vendor Managed Inventory Service Solutions (VMI)

Delivers enhanced supply chain value by delivering increased productivity and process efficiencies across the customer operations.



Cleanroom Construction Solutions

Thomas is proud to be partnered with industry leader Angstrom Technology, providing a one-stop destination for all your cleanroom needs.



Cleanroom Design

Thomas has a national team of Cleanroom Construction Coordinators to help you with your supplies, onsite inventory requirements, support of cleanbuild protocol specifications, and for project planning and budgeting.



Largest Supplier Portfolio

Products supporting cleanroom and clean manufacturing environments which provides choice, innovative sourcing options, quality, availability, and environmentally sustainable solutions.



Dedicated Production Customer Service (PCS) Specialists

Ensuring quality management of customer specific requirements, order accuracy, on-time delivery, certifications, and provide 360° supply chain communication.



Assurance of Supply

Through Thomas's Customer Inventory Reserve Program which delivers business continuity, mitigates the risk of production shutdowns, and improves inventory forecasting, planning collaboration and visibility.

For more information contact your Thomas Scientific Sales Representative

CleanroomSolutions@ThomasSci.com

[Phone 833.750.1234](tel:833.750.1234)



CE CAPABILITIES



Production Customer Service Based in the United States

Thomas (PCS) Specialists, based in the United States, ensure quality management of customer specific requirements, order accuracy, on-time delivery, and certifications.

Our PCS Specialists provide 360° order-to-delivery services and communication, manage inventory, and order requirements for customers working in clean manufacturing environments.

Thomas' PCS specialists have committed themselves mitigating risk of any supply disruptions your facility requires to remain in optimal working order. They also have their fingers on the pulse of orders, delivery requirements, quotes, and new product needs; and will work together with your CE Account Specialist to quickly resolve any technical or logistical issues that may arise. Other responsibilities include:

- ▶ Onboarding/documentation of new and existing customer requirements
- ▶ Proactive review and management of customer's critical materials
- ▶ Set up of customer part numbers into ERP, as requested
- ▶ Expedite customer backlog, as needed
- ▶ Contribution to customer review process, presentations, and continuous improvement opportunities

End User Experience

Improves the customer experience by having the right products on hand

Increase Productivity

Increases end users & manufacturing productivity

Reduces Stockouts

Reduce stockouts & downtime without overstocking or carrying excess safety stock

360° Order Management

Order entry to pick, pack & delivery execution with the right paperwork (CofA, CofC)

Availability

PCS Specialists are located in US & available from 8 am to 8 pm Eastern

Knowledgeable (Cleanroom)

How critical cleanroom, safety, & cleaning products impact your operations

Expanding Relationship

Provide you more time to expand product sales – product categories & services to manage products sold

Access Product & Service Resources

PCS Specialist is your available partner to help you get timely access to Thomas support resources (Quality, Supply Chain, Sales, etc.)

Enhanced Inventory

Visibility through our cloud based mobile inventory management solution

Extension

An extension of your purchasing, sourcing & transportation departments

For more information contact your Thomas Scientific Sales Representative

CleanroomSolutions@ThomasSci.com

Phone 833.750.1234





Lab Coats

Frocks

Coveralls

Sleeves

Bouffant Caps

Beard Covers

Hoods

Masks

Shoe Covers

Gloves

APPAREL

POLYPROPYLENE LAB COATS & COVERALLS



XtraClean® Polypropylene XC7000 Series Lab Coats & Coveralls

This economical protective apparel is made of an anti-static treated polypropylene. The cloth-like material is lightweight, breathable and durable for cool comfort all day. Ideal for non-hazardous applications in a dry setting.



XC7020 Series Lab Coats

- White
- Elastic wrists
- Standard collar
- 5 snap closure

Case: 30

Thomas No.	Size
20A00J366	Small
20A00J367	Medium
20A00J368	Large
20A00J369	X-Large
20A00J370	2X-Large
20A00J371	3X-Large
20A00J372	4X-Large
20A00J373	5X-Large



XC7214W Series Lab Coats

- White
- Knit wrists
- Knit collar
- Snap closure
- 3 pockets

Case: 30

Thomas No.	Size
20A00L745	Small
20A00L746	Medium
20A00L747	Large
20A00L748	X-Large
20A00L749	2X-Large
20A00L750	3X-Large
20A00L751	4X-Large
20A00L752	5X-Large

XC7000 Material

Physical Properties

Test Item	Test Standard	Result
Weight (g/m ²)	ASTM D3776/D-3776M-20 (option C)	39.0
Ball Burst Strength, lbf	ASTM D3787-16	17.1
Mullen Burst Strength, psi	ASTM D3786/D3786M-18	20.0
Tearing Strength Length, lbf Width, lbf	ASTM D5587-15	17.1
		6.9
Tensile Strength Length, lbf Width, lbf	ASTM D 5034-09, Grab Method	20.7
		18.0
Particle Shedding (Helmke Drum)	IEST-RP-CC003.4	Category II
Electrostatic Decay of Fabric	FTMS 101C - Method 4046	PASS
Barrier Properties		
Bacterial Filtration Efficiency	ASTM F2101	35%
Differential Pressure (mm H ₂ O/cm ²)		3.56



XC7214B Series Lab Coats

- Blue
- Knit wrists
- Knit collar
- Snap closure
- 3 pockets

Case: 30

Thomas No.	Size
20A00L737	Small
20A00L738	Medium
20A00L739	Large
20A00L740	X-Large
20A00L741	2X-Large
20A00L742	3X-Large
20A00L743	4X-Large
20A00L744	5X-Large



XC7030 Coveralls

- White
- Elastic wrists & ankles
- Standard collar
- Zipper

Case: 25

Thomas No.	Size
20A00J375	Medium
20A00J376	Large
20A00J377	X-Large
20A00J378	2X-Large
20A00J379	3X-Large
20A00J380	4X-Large
20A00J381	5X-Large

▶ See Page 7 for
Apparel Sizing Chart

Basic Controlled Environment Protection Guideline

Key: "R" Recommended; "AS" Application Specific; "NR" Not Recommended

Protection Product	ISO 8	ISO 7	ISO 6	ISO 5 non-sterile
Frock	R	R	AS	AS
Lab Coat	AS	NR	NR	NR
Coverall	AS	AS	R	R
Hair Cover	R	R	R	R
Beard Cover/Hood	R	R	R	R
Face Mask	R	R	R	R
Shoe Cover	AS	R	R	R
Cleanroom Glove	AS	R	R	R
Sticky Mat	R	R	R	R



XtraClean® SMS XC8000 Series Lab Coats

The XC 3-layer SMS fabric provides breathable comfort with a cloth-like feel. The polypropylene filtration layer is ideal for an all day cool and protects against light liquid splash.



XC8614W Series Lab Coats

- White
- Knit wrists
- Knit collar
- Snap closure
- 3 pockets

Case: 30

Thomas No.	Size
20A00K926	Small
20A00K927	Medium
20A00K928	Large
20A00K929	X-Large
20A00K930	2X-Large
20A00K931	3X-Large



XC8614B Series Lab Coats

- Blue
- Knit wrists
- Knit collar
- Snap closure
- 3 pockets

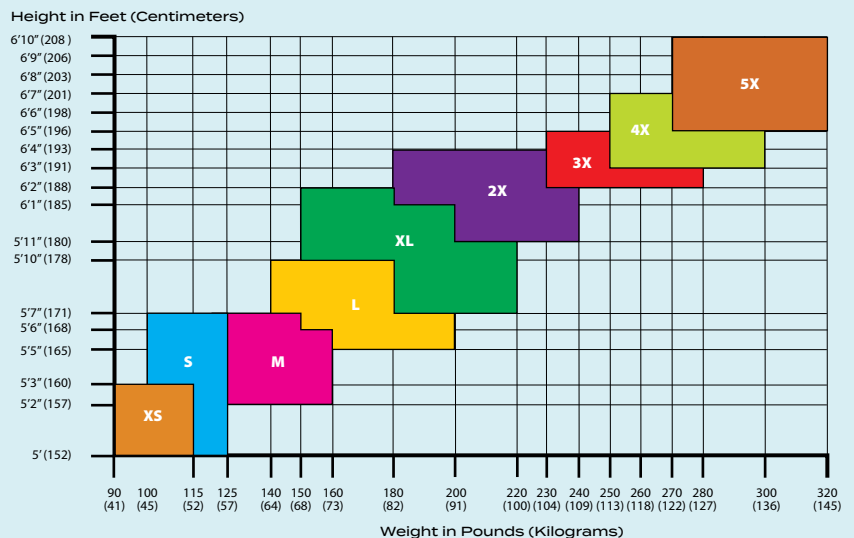
Case: 30

Thomas No.	Size
20A00K920	Small
20A00K921	Medium
20A00K922	Large
20A00K923	X-Large
20A00K924	2X-Large
20A00K925	3X-Large

XC8000 Material		
Physical Properties		
Test Item	Test Standard	Result
Weight (g/m ²)	ASTM D3776/D-3776M-20 (Option C)	64.1
Ball Burst Strength, lbf	ASTM D3787-16	151.5
Mullen Burst Strength, psi	ASTM D3786/D3786M-18	38.0
Tearing Strength Length, lbf Width, lbf	ASTM D5587-15	18.5
		9.6
Tensile Strength Length, lbf Width, lbf	ASTM D 5034-09, Grab Method	43.2
		27.9
Water Vapor Transmission, g/24h/m ²	ASTM E96/E96M-16 (Procedure B)	1034
Particle Shedding (Helmke Drum)	IEST-RP-CC003.4	Category II
Electrostatic Decay of Fabric	FTMS 101C - Method 4046	PASS
Barrier Properties		
Bacterial Filtration Efficiency	ASTM F2101-19	96%
Differential Pressure (mm H ² O/cm ²)		6.16
Water Resistance, Impact	AATCC 42-2017e	0.00
Synthetic Blood Resistance Penetration, 100%	ASTM F1670/F1670M-2017, (Procedure B)	PASS

Apparel Sizing Chart

ANSI/ISEA 101-2014
Recommended Sizing Chart for
Limited Use Disposable Apparel



MICROPOROUS FROCKS, COVERALLS & SLEEVES



XtraClean® Microporous XC6000 Series Frocks, Coveralls & Sleeves

XC microporous fabric is a low linting protective fabric ideal for cleanroom use. It is latex-free and anti-static treated. It has a heavyweight blend of polyethylene and propylene that creates a membrane suitable for some hazardous liquids, blood-borne pathogens and where liquid splash is a concern. The polypropylene filtration layer is ideal for an all day cool and protects against light liquid splash.



Microporous XC6000 Series Frocks

- White
- Elastic wrists
- Mandarin collar
- 5-Snap closure

Case: 30

Thomas No.	Size
20A00J455	Small
20A00J456	Medium
20A00J457	Large
20A00J458	X-Large
20A00J459	2X-Large
20A00J460	3X-Large
20A00J461	4X-Large
20A00J462	5X-Large



Microporous XC6000 Series Coveralls

- White
- Elastic wrists & ankles
- Standard collar
- Zipper

Case: 25

Thomas No.	Size
20A00J463	Small
20A00J464	Medium
20A00J465	Large
20A00J466	X-Large
20A00J467	2X-Large
20A00J468	3X-Large
20A00J469	4X-Large
20A00J470	5X-Large

XC6000 Material		
Physical Properties		
Test Item	Test Standard	Result
Weight (g/m ²)	ASTM D3776/D-3776M-20 (Option C)	57.7
Ball Burst Strength, lbf	ASTM D3787-16	105.0
Mullen Burst Strength, psi	ASTM D3786/D3786M-18	32
Tearing Strength		
Length, lbf	ASTM D5587-15	11.5
Width, lbf		4.8
Tensile Strength		
Length, lbf	ASTM D 5034-09, Grab Method	29.2
Width, lbf		18.4
Water Vapor Transmission, g/24h/m ²	ASTM E96/E96M-16 (Procedure B)	878
Particle Shedding (Helmke Drum)	IEST-RP-CC003.4	Category II
Electrostatic Decay of Fabric	AATCC TM 76-2000e3(2018)e	PASS
Barrier Properties		
Water Resistance, Impact	AATCC 42-2017e	0.00
Synthetic Blood Resistance Penetration, 100%	ASTM F1670/F1670M-2017, (Procedure B)	PASS
Chemical Resistance		
Household Bleach 100%	ASTM F903-03	PASS
Hydrogen Peroxide	ASTM F903-03	PASS
Phosphoric Acid 85%	ASTM F903-03	PASS
Sulfuric Acid 70%	ASTM F903-03	FAIL



Microporous XC6000 Series Sleeves

- White
- Elastic bound ends

Case: 200

Thomas No.	Size
20A00J454	18"

▶ See Page 7 for Apparel Sizing Chart



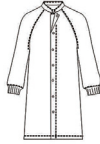
FROCKS & COVERALLS

Reusable Garments

XtraClean® CFRC-74LB Frock, Altessa Grid Fabric, Light Blue

Raglan sleeve, military collar, snaps at front opening, sleeves with knit cuff.

Fabric: 99% Polyester; 1% Carbon



CFRC-74LB (Altessa Grid Fabric)

- Light Blue
- Raglan sleeve
- Military collar
- Snaps at front opening
- Sleeves with knit cuff

1 each

Thomas No.	Size
23A00H161	X-Small
23A00H162	Small/Medium
23A00H163	Medium
23A00H164	Large
23A00H165	X-Large
23A00H109	2X-Large
23A00H166	3X-Large
23A00H167	4X-Large

Thomas No.	Description	Each
Cleanroom Reusable Frock		
23A00H161	Xtraclean Frock, Light Blue, X-Small	1
23A00H162	Xtraclean Frock, Light Blue, Small	1
23A00H163	Xtraclean Frock, Light Blue, Medium	1
23A00H164	Xtraclean Frock, Light Blue, Large	1
23A00H165	Xtraclean Frock, Light Blue, X-Large	1
23A00H109	Xtraclean Frock, Light Blue, 2X-Large	1
23A00H166	Xtraclean Frock, Light Blue, 3X-Large	1
23A00H167	Xtraclean Frock, Light Blue, 4X-Large	1



► See Page 7 for Apparel Sizing Chart

XtraClean® Reusable Cleanroom Frock, Launderable, Altessa Polyester Grid Fabric, White

XtraClean reusable frocks feature raglan sleeves with a 3/8 inch encased elastic, a military collar and a coil zipper front opening with two (2) snaps at the collar and a snap at the bottom of the zipper.

Thomas No.	Description	Each
Cleanroom Launderable Frock		
XC5000-XS	Xtraclean Frock, White, X-Small	1
XC5000-S	Xtraclean Frock, White, Small	1
XC5000-M	Xtraclean Frock, White, Medium	1
XC5000-L	Xtraclean Frock, White, Large	1
XC5000-XL	Xtraclean Frock, White, X-Large	1
XC5000-2XL	Xtraclean Frock, White, 2X-Large	1
XC5000-3XL	Xtraclean Frock, White, 3X-Large	1
XC5000-4XL	Xtraclean Frock, White, 4X-Large	1



XtraClean® Reusable Cleanroom Frock, Launderable, Altessa CR/ESD Polyester Fabric

XtraClean reusable frocks feature raglan sleeves for more movement, military collar for a clean look. Zipper front, snaps at collar and bottom of zipper, ESD knit cuffs.

Meets standards required for use in ISO 5 (Class 100) – ISO 8 (Class 100,000) cleanrooms and other controlled environments.

Thomas No.	Description	Each
Cleanroom Launderable Frock		
XC5000LB-M	Xtraclean Frock, Light Blue, Medium	1
XC5000LB-L	Xtraclean Frock, Light Blue, Large	1
XC5000LB-XL	Xtraclean Frock, Light Blue, X-Large	1
XC5000LB-2XL	Xtraclean Frock, Light Blue, 2X-Large	1
XC5000LB-3XL	Xtraclean Frock, Light Blue, 3X-Large	1



FROCKS & COVERALLS

Reusable Garments



XtraClean® Reusable Cleanroom Coveralls, Launderable, Altessa Grid, White, Blue & Navy Blue

Raglan sleeve, military collar, snaps at top of zipper and bottom of leg hem, coil zipper for easy donning. Sleeves with ESD knit cuffs and color coded hang loops. Meets standards required for use in ISO 5 (Class 100) – ISO 8 (Class 100,000) cleanrooms and other controlled environments.

Fabric: 99% Polyester; 1% Carbon

Thomas No.	Description	Each
Cleanroom Reusable Coveralls – White		
XC5100-XS	Xtraclean Coveralls, White, X-Small	1
XC5100-S	Xtraclean Coveralls, White, Small	1
XC5100-M	Xtraclean Coveralls, White, Medium	1
XC5100-L	Xtraclean Coveralls, White, Large	1
XC5100-XL	Xtraclean Coveralls, White, X-Large	1
XC5100-2XL	Xtraclean Coveralls, White, 2X-Large	1
XC5100-3XL	Xtraclean Coveralls, White, 3X-Large	1
XC5100-4XL	Xtraclean Coveralls, White, 4X-Large	1
Cleanroom Reusable Coveralls – Blue		
XC5100B-S	Xtraclean Coveralls, Blue, Small	1
XC5100B-M	Xtraclean Coveralls, Blue, Medium	1
XC5100B-L	Xtraclean Coveralls, Blue, Large	1
XC5100B-XL	Xtraclean Coveralls, Blue, X-Large	1
XC5100B-3XL	Xtraclean Coveralls, Blue, 3X-Large	1
Cleanroom Reusable Coveralls – Navy Blue		
XC5100NV-S	Xtraclean Coveralls, Navy Blue, Small	1
XC5100NV-M	Xtraclean Coveralls, Navy Blue, Medium	1
XC5100NV-L	Xtraclean Coveralls, Navy Blue, Large	1
XC5100NV-XL	Xtraclean Coveralls, Navy Blue, X-Large	1

► See Page 7 for Apparel Sizing Chart

Cleanroom Air Quality Standards

Maximum concentration limits (particles/m³ of air) for particles equal to and larger than the sizes listed below.

Class	FED STD 209E Equivalent	0.1 micron	0.2 micron	0.3 micron	0.5 micron	1 micron	5 micron
ISO 1		10	2				
ISO 2		100	24	10	4		
ISO 3	1	1,000	237	102	35	8	
ISO 4	10	10,000	2,370	1,020	352	83	
ISO 5	100	100,000	23,700	10,200	3,520	832	29
ISO 6	1,000	1,000,000	237,000	102,000	35,200	8,320	293
ISO 7	10,000				352,000	83,200	2,930
ISO 8	100,000				3,529,000	832,000	29,300
ISO 9						8,320,000	293,000



BOUFFANT CAPS & BEARD COVERS

XtraClean® Bouffant Caps, Beard Covers

XtraClean bouffant caps are made of a spun-bonded polypropylene fabric. The elastic band is latex-free and available in several sizes for full coverage. They are packaged flat or pleated in a variety of colors.

XtraClean beard covers are made from a light-weight, spun bound polypropylene material. The elastic band is latex-free for a secure fit.



Thomas No.	Description	Case Qty.
Bouffant Caps		
20A00J384	XC2100-B5 Bouffant Cap, Blue, 21"	500
20A00J385	XC2100-W5 Bouffant Cap, White, 21"	500
20A00J386	XC2400-B5 Bouffant Cap, Blue 24"	500
20A00J387	XC2400-W5 Bouffant Cap, White, 24"	500
20A00J388	XC2100-W1 Bouffant Cap, White, 21"	1000
20A00J389	XC2400-B1 Bouffant Cap, Blue, 24"	1000
20A00J390	XC2400-W1 Bouffant Cap, White, 24"	1000
20A00J391	XC2600-W1 Bouffant Cap, White, 26"	1000
Pleated Bouffant Caps - Double Elastic		
20A00M387	Pleated Bouffant Cap, White, 21"	1000
20A00M388	Pleated Bouffant Cap, White, 24"	1000
20A00M389	Pleated Bouffant Cap, Blue, 21"	1000
20A00M390	Pleated Bouffant Cap, Blue, 24"	1000
21A00A450	Pleated Bouffant Cap, Red, 21"	1000
21A00A451	Pleated Bouffant Cap, Red, 24"	1000
Beard Covers		
20A00K117	XC2000 Beard Cover, White, Universal	500
20A00K118	XC2000 Beard Cover, White, Universal	1000

XC2000 Material		
Physical Properties		
Test Item	Test Standard	Result
Weight (g/m ²)	ASTM D3776/D-3776M-20 (Option C)	11.7
Tensile Strength	ASTM D 5034-09, Grab Method	5.0
Length, lbf		
Width, lbf		4.2

HOODS

XtraClean® Ninja-Style Hood

This XtraClean hood features a latex-free elastic eye opening and side ties for a secure fit. This shoulder length hood allows the user the ability to tuck this hood underneath a coverall for an improved seal.



Thomas No.	Description	Case Qty.
Protective Cleanroom Ninja-Style Hood – Disposable		
XC7130	XC7000 Polypropylene, Heavy Weight, White, Universal	200
XC2135-XL	Polypropylene, 16g, X-Large	200
Protective Cleanroom Ninja-Style Hood – Reusable Garment		
XC2135-LG	Polypropylene, 16g, Large	200

XC7130 Material		
Physical Properties		
Test Item	Test Standard	Result
Weight (g/m ²)	ASTM D3776/D-3776M-20 (option C)	29.3
Ball Burst Strength, lbf	ASTM D3787-16	40.5
Mullen Burst Strength, psi	ASTM D3786/D3786M-18	6.0
Tearing Strength		
Length, lbf	ASTM D5587-15	4.8
Width, lbf		8.1
Tensile Strength		
Length, lbf	ASTM D 5034-09, Grab Method	10.1
Width, lbf		12.1
Particle Shedding (Helmke Drum)	IEST-RP-CC003.4	Category II
Barrier Properties		
Bacterial Filtration Efficiency	ASTM F2101	38.5%
Differential Pressure (mm H ² O/cm ²)		0.18
Water Resistance, Impact	AATCC 42-2007	26.5



XtraClean® White Microporous Hood

Microporous hood provides excellent protection in hazardous and non-hazardous dry-dust environments. Shoulder length pull over with elastic open face. Secure fit with 2 ties.

Thomas No.	Description	Case Qty.
Microporous Hood		
21A00K705	Microporous Hood, White, Universal	100



XtraClean® Pullover Open Face Hood

Reusable Garment

Altessa CR/ESD grid polyester fabric, binding around face opening, 2 vertical snaps at temple, 4 vertical and horizontal back snaps for adjustment, split skirt shoulder drape.

Thomas No.	Description	Each
Launderable Cleanroom Hoods, Altessa Grid		
XC5300-S	Cleanroom Hood, Altessa Grid, White, Small	1
XC5300-M	Cleanroom Hood, Altessa Grid, White, Medium	1
XC5300-L	Cleanroom Hood, Altessa Grid, White, Large	1
XC5300B-L	Cleanroom Hood, Altessa Grid, Blue, Large	1
XC5300-XL	Cleanroom Hood, Altessa Grid, White, X-Large	1
XC5300B-XL	Cleanroom Hood, Altessa Grid, Blue, X-Large	1

FACE MASKS

XtraClean® Face Masks

XC face masks are constructed with 3 layers of non-woven polypropylene. They have 7" of protection and a flexible aluminum nose bridge for a proper seal. They provide 99% bacterial and particulate filtration. Available in earloop and K-Style featuring a unique heat seal on both sides for a more secure fit.



Thomas No. 20A00J392

- Blue
- Earloop
- Size: 7"
- Case: 500



Thomas No. XC3200-KW5

- White
- K-style
- Size: 7"
- Case: 500

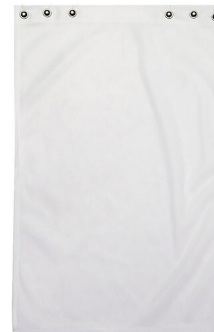
Thomas No.	Description	Case Qty.
Cleanroom Face Masks		
20A00J392	XC3000-5B Face Mask, Blue, Earloop	500
XC3200-KW5	XC3200-KW5 Face Mask, White, K-Style	500

XC3000-5B Face Mask		
Physical Properties		
Test Item	Test Standard	Result
Bacterial Filtration Efficiency (BFE)	ASTM F2101	>99%
Differential Pressure (mm H ₂ O/cm ²)		5.28
Latex Particle Challenge (PFE)	ASTM F2299/F2299M-03	>98.6%

XtraClean® Reusable Snap-in Face Mask

Ideal for use in controlled environments, industrial manufacturing, electronics and aerospace, food packaging, cultivation, university labs and medical and dental facilities. Tricot fabric, 100% polyester. Six male snaps; three on each side at top hem. ISO 7 (Class 10,000) compatible. Average wear and tear lifespan is 50-100 washes.

Thomas No.	Description	Case Qty.
Reusable Snap-In Face Mask		
CD175Wh	Reusable Facemask, Snap-In, White, One Size	1



SHOE COVERS



General Protection

Standard Polypropylene Shoe Covers

These basic disposable shoe covers are made of durable polypropylene and are 100% latex and silicon free. Added anti-skid print on sole. Excellent for transitions between “clean” and “unclean” areas.

Packaging: 150/Pack; 300/Case

Color: Blue

Thomas No.	Description	Case Qty.
CE-Force® Polypropylene Shoe Covers Made in North America		
20A00G711	CE-Force Basic Shoe Cover, Polypropylene, Anti-Skid Print Pattern, Universal	300
20A00G712	CE-Force Basic Shoe Cover, Polypropylene, Anti-Skid Print Pattern, X-Large	300

Thomas No.	Description	Case Qty.
XtraClean® Polypropylene Shoe Covers Made in China		
20A00J382	XC4438 Shoe Cover, Polypropylene Non-Skid, Large	300
20A00J383	XC4438 Shoe Cover, Polypropylene Non-Skid, X-Large	300
23A00U514	XC4438 Shoe Cover, Polypropylene Non-Skid, 2X-Large	300

CE-Force® Material Physical Properties		
Test Item	Test Standard	Result
Coefficient of Friction Machine Direction	ASTM D1894-14 Static Kinetic	0.492
		0.406
Coefficient of Friction Cross Direction	ASTM D1894-14 Static Kinetic	0.935
		0.998
Breaking Strength and Elongation - Grab Test (lbf) Machine Direction	ASTM D5034-09(2017)	15.3
Breaking Strength and Elongation - Grab Test (lbf) Cross Direction	ASTM D5034-09(2017)	12.0
Trapezoid Tearing Strength (lbf) Machine Direction	ASTM D5587-15(2019)	8.9
Trapezoid Tearing Strength (lbf) Cross Direction	ASTM D5587-15(2019)	6.0
Ball Burst Strength (lbf)	ASTM D3787-16 MOD.	11.1
Helmke Drum Particle Count	IEST-RP-CC003.4	Category I



CPE Shoe Covers

These single use shoe covers are made of compressed polyethylene (CPE). Seamless sole better for grip in wet applications. Commonly used as a liner under laundered boot covers.

Available in two thicknesses, 2.5 mil (lightweight) and 5.5 mil (heavyweight).

Thomas No.	Description	Case Qty.
XtraClean® CPE Shoe Covers		
20A00K906	Lightweight, Blue, Large	1000
20A00K907	Lightweight, Blue, X-Large	1000
20A00K908	Lightweight, White, Large	1000
20A00K909	Lightweight, White, X-Large	1000
20A00K910	Heavyweight, Blue, X-Large	1000
20A00K911	Heavyweight, White, X-Large	1000

Material Physical Properties			
Test Item	Test Standard	Result Thomas Nos. 20A00K906-K909	Result Thomas Nos. 20A00K910-K911
Weight (g/m ²)	ASTM D3776/D-3776M-20 (option C)	27.8	53.5
Ball Burst Strength, lbf	ASTM D3787-16	3.7	6.5
Mullen Burst Strength, psi	ASTM D3786/D3786M-18	6.0	9.0
Tearing Strength Length, ibf Width, ibf	ASTM D5587-15	2.8	5.2
		2.0	4.1
Tensile Strength Length, ibf Width, ibf	ASTM D 5034-09, Grab Method	6.5	11.9
		5.7	11.1
Water Vapor Transmission, g/24h/m ²	ASTM E96/E96M-16 (Procedure B)	5	12

SHOE COVERS

High Grip Protection

CE-Force® I5 Shoe Covers

This series is designed to give maximum anti-skid protection on smooth, wet or powdered surfaces while remaining suitable for controlled environments due to the low linting, multi-layer materials. All have seamless soles, ultrasonic welding and are latex-free. These strong and durable shoe covers are available in two sizes. Universal fits most shoe sizes. X-Large fits big shoes, snow or work boots.



These shoe covers are built to conform up to ISO 5 level cleanrooms. The proprietary fabrics offers strength, anti-skid, fluid resistance and durability. Finished with seamless soles and side. Double bag packaged for cleanroom compliance.

Packaging: Universal - 150/Pack; 300/Case, X-Large - 120/Pack; 240/Case

Color: Blue

Thomas No.	Description	Case Qty.
CE-Force® I5 Shoe Covers		
20A00G713	I5 Shoe Cover, Blue, Waterproof, Anti-Skid, Universal	300
20A00G714	I5 Shoe Cover, Blue, Waterproof, Anti-Skid, X-Large	240

Material Physical Properties		
Test Item	Test Standard	Result
Coefficient of Friction Machine Direction	ASTM D1894-14 Static	0.870
	Kinetic	0.899
Coefficient of Friction Cross Direction	ASTM D1894-14 Static	0.935
	Kinetic	0.998
Breaking Strength and Elongation - Grab Test (lbf) Machine Direction	ASTM D5034-09(2017)	24.6
Breaking Strength and Elongation - Grab Test (lbf) Cross Direction	ASTM D5034-09(2017)	21.3
Trapezoid Tearing Strength (lbf) Machine Direction	ASTM D5587-15(2019)	11.5
Trapezoid Tearing Strength (lbf) Cross Direction	ASTM D5587-15(2019)	8.6
Water Resistance Impact Penetration	AATCC TM42-2017e	None Seen
Ball Burst Strength (lbf)	ASTM D3787-16 MOD.	19.1
Helmke Drum Particle Count	IEST-RP-CC003.4	Category I

XtraGrip II Shoe Covers

Ideal for a variety of floor surfaces, including tile, coated concrete and epoxy floors. Seamless bottom design is ideal for wet environments and maximum non-skid performance.

Features: Sonic welding, Seamless bottom

Packaging: 100/Bag; 3 Bags/Case; 300/Case

Colors: White and Blue



Thomas No.	Description	Case Qty.
XtraClean® XtraGrip II Shoe Covers		
20A00U840	XtraGrip II Shoe Covers, White, Universal	300
20A00U841	XtraGrip II Shoe Covers, White, X-Large	300
20A00U842	XtraGrip II Shoe Covers, Blue, Universal	300
20A00U843	XtraGrip II Shoe Covers, Blue, X-Large	300

Material Physical Properties		
Test Item	Test Standard	Result
Weight (g/m ²)	ASTM D3776/D-3776M-20 (Option C)	56.5
Ball Burst Strength, lbf	ASTM D3787-16	15.6
		0.509
Mullen Burst Strength, psi	ASTM D3786/D3786M-18	16.0
Tearing Strength Length, ibf Width, ibf	ASTM D5587-15	11.8
		8.6
Tensile Strength Length, ibf Width, ibf	ASTM D 5034-09, Grab Method	24.5
		20.1
Water Vapor Transmission, g/24h/m ²	ASTM E96/E96M-16 (Procedure B)	11
Coefficient of Friction Static; μ_s Kinetic; μ_k	ASTM D1894	0.846
		0.839
Particle Shedding (Helmke Drum)	IEST-RP-CC003.4	Category II
Barrier Properties		
Water Resistance, Impact, grams	AATCC 42-2017e	0.00

SHOE COVERS

High Grip Protection

CE-Force® HydroGrip Shoe Covers

Provides good control on smooth, wet or powdered floors. Added protection from wet shoes, thanks to their inner layer that absorbs liquids. Low linting and fit for clean environments.

Features: Multi-layer, Hydrophilic inner layer, Seamless bottom

Packaging: Universal - 150/Pack; 300/Case, X-Large - 120/Pack; 240/Case

Color: Blue



Thomas No.	Description	Case Qty.
CE-Force® HydroGrip Shoe Covers		
20A00T853	HydroGrip Shoe Covers, Blue, Universal	300
20A00T854	HydroGrip Shoe Covers, Blue, X-Large	240

Material Physical Properties		
Test Item	Test Standard	Result
Coefficient of Friction Machine Direction	ASTM D1894-14 Static Kinetic	0.756
		0.743
Coefficient of Friction Cross Direction	ASTM D1894-14 Static Kinetic	0.710
		0.694
Breaking Strength and Elongation – Grab Test (lbf) Machine Direction	ASTM D5034-09(2017)	26.6
Breaking Strength and Elongation – Grab Test (lbf) Cross Direction	ASTM D5034-09(2017)	21.4
Trapezoid Tearing Strength (lbf) Machine Direction	ASTM D5587-15(2019)	11.8
Trapezoid Tearing Strength (lbf) Cross Direction	ASTM D5587-15(2019)	8.1
Water Resistance Impact Penetration	AATCC TM42-2017e	None Seen
Water retention rate (%)	NF G 07-166-1993 (MOD.)	229.6
Drying duration, Ts (min)	NF G 07-166-1993 (MOD.)	100
Ball Burst Strength (lbf)	ASTM D3787-16 MOD.	26.0

CE-Force® CE-Grip Shoe Covers

Provides a foot barrier with excellent waterproofing and anti-skid properties. High level of protection for environments such as pharmaceutical manufacturing, animal labs and industries like rubber, steel or oil. Offers good control on smooth, wet or powdered surfaces and are strong enough to be used on rough floors. Durable and low linting.

Features: Multi-layer, Seamless bottom, Anti-skid grip

Packaging: Universal - 150/Pack; 300/Case, X-Large - 120/Pack; 240/Case

Color: Blue



Thomas No.	Description	Case Qty.
CE-Force® CE-Grip Shoe Covers		
20A00G715	CE-Grip Shoe Cover, HD Blue, Waterproof, Anti-Skid, Universal	300
20A00G716	CE-Grip Shoe Cover, HD Blue, Waterproof, Anti-Skid, X-Large	240

Material Physical Properties		
Test Item	Test Standard	Result
Coefficient of Friction Machine Direction	ASTM D1894-14 Static Kinetic	0.689
		0.699
Coefficient of Friction Cross Direction	ASTM D1894-14 Static Kinetic	0.652
		0.666
Breaking Strength and Elongation – Grab Test (lbf) Machine Direction	ASTM D5034-09(2017)	26.6
Breaking Strength and Elongation – Grab Test (lbf) Cross Direction	ASTM D5034-09(2017)	21.4
Trapezoid Tearing Strength (lbf) Machine Direction	ASTM D5587-15(2019)	14.6
Trapezoid Tearing Strength (lbf) Cross Direction	ASTM D5587-15(2019)	10.2
Water Resistance Impact Penetration	AATCC TM42-2017e	None Seen
Ball Burst Strength (lbf)	ASTM D3787-16 MOD.	25.3

SHOE & BOOT COVERS

Reusable Garments

XtraClean® Reusable Cleanroom Shoe Covers, Launderable, Taffeta, White

XtraClean reusable shoe covers feature encased 3/8 inch elastic at the top opening and two (2) snaps for adjustment on inside back of the shoe cover.

Fabric: Polyester Altessa Grid



Thomas No.	Description	Qty.
XtraClean® Shoe Covers		
XC5400-S	Xtra-Clean Shoe Covers, White, X-Small	2 ea./1 pr.
XC5400-M	Xtra-Clean Shoe Covers, White, Medium	2 ea./1 pr.
XC5400-L	Xtra-Clean Shoe Covers, White, Large	2 ea./1 pr.
XC5400-XL	Xtra-Clean Shoe Covers, White, X-Large	2 ea./1 pr.
XC5400-2XL	Xtra-Clean Shoe Covers, White, 2X-Large	2 ea./1 pr.
XC5400-3XL	Xtra-Clean Shoe Covers, White, 3X-Large	2 ea./1 pr.

XtraClean® Reusable Cleanroom Boot Covers, Launderable, Altessa Grid, White

XtraClean reusable boot covers feature a webbing closure system across the toes and ankle with a side release buckle.

The top opening features a 1 inch elastic and webbing closure with snap adjustments and an X-Stat sole is reinforced with twill and sewn with conductive threading.

Fabric: Polyester Altessa Grid



Thomas No.	Description	Qty.
XtraClean® Boot Covers		
XC5200-XS	Xtra-Clean Boot Covers, White, X-Small	2 ea./1 pr.
XC5200-S	Xtra-Clean Boot Covers, White, Small	2 ea./1 pr.
XC5200-M	Xtra-Clean Boot Covers, White, Medium	2 ea./1 pr.
XC5200-L	Xtra-Clean Boot Covers, White, Large	2 ea./1 pr.
XC5200-XL	Xtra-Clean Boot Covers, White, X-Large	2 ea./1 pr.
XC5200-2XL	Xtra-Clean Boot Covers, White, 2X-Large	2 ea./1 pr.



CLEANROOM GLOVES



CE-Force® Cleanroom Nitrile Gloves

CE-Force nitrile cleanroom gloves are designed for use in Class 10 (ISO 5) and higher cleanrooms. Made from virgin nitrile copolymer material, these high quality powder-free gloves are accelerator-free and feature beaded cuffs for secure seal and textured fingers for added grip. In order to control defects and ensure the specified product is consistently manufactured, these gloves are produced at high quality standards, consisting of stringent quality checks as well as laboratory testing at every stage of our production process.

Packaging: 50 pcs x 2 into double cleanroom sealed bag;
10 bags into carton liner; 1000 gloves per master case

Color: White

Thomas No.	Description	Case Qty.
Cleanroom Nitrile Gloves		
20A00K183	Nitrile Gloves, 12" White, X-Small	1000
20A00K184	Nitrile Gloves, 12" White, Small	1000
20A00K185	Nitrile Gloves, 12" White, Medium	1000
20A00K186	Nitrile Gloves, 12" White, Large	1000
20A00K187	Nitrile Gloves, 12" White, X-Large	1000
20A00K188	Nitrile Gloves, 12" White, 2X-Large	1000

Physical Properties		
Parameter	Test Method	Specifications
Tensile Strength (MPa)	ASTM D 412	> 18
Modulus @300 (MPa)	ASTM D 412	< 9
Ultimate Elongation (%)	ASTM D 412	> 500
Pinhole	ASTM D 5151	G1 AQL 1.5
LPC (≥ 0.50 micron, counts/cm2)	IEST RP-CC 005.4	Max 650
Chloride, Cl- (ug/cm2)	IEST RP-CC 005.4	Max 0.300
Nitrate, NO3- (ug/cm2)		Max 0.150
Sulfate, SO42- (ug/cm2)		Max 0.020
Sodium, Na+ (ug/cm2)		Max 0.050
Potassium, K+ (ug/cm2)		Max 0.030
Lithium, Li+ (ug/cm2)		Max 0.0001
Magnesium, Mg2+ (ug/cm2)		Max 0.010
Calcium, Ca2+ (ug/cm2)		Max 0.300
Zinc, Zn2+ (ug/cm2)		Max 0.050
Total Non Volatile Residues (TNVR) in water (ug/cm2)		
Silicone, Amide, DOP By FTIR		Absent
Surface Resistance (ohms)	ANSI/ESD STM 11.11	Max 5 X 10 ¹¹
Static Decay (seconds)	WI-QA/15-11	Max 2.0

Dimensional Parameters – 12" Gloves

Parameter	XS	S	M	L	XL	2XL
Thomas No.	20A00K183	20A00K184	20A00K185	20A00K186	20A00K187	20A00K188
Glove Weight (gram/pc)	5.5 + 0.5	6.0 + 0.5	6.5 + 0.5	7.0 + 0.5	7.5 + 0.5	8.0 + 0.5
Palm Width (mm)	75 + 5	85 + 5	95 + 5	105 + 5	115 + 5	125 + 5
Glove Weight (gram/pc)	Min 300					
Thickness - Cuff (mm)	0.08 – 0.10					
Thickness - Palm (mm)	0.10 – 0.12					
Thickness - Finger (mm)	0.12 – 0.14					



Advanced Technology



Medical Device



Microelectronics



Defense



Battery



Optics



A hand is shown holding a white, textured cloth against a solid red background. The hand is positioned in the upper right quadrant, with fingers wrapped around the cloth. The lighting is soft, highlighting the texture of the fabric and the skin of the hand.

Polyester

Cellulose

Microfiber

Quilted Polyester

PreSat Meltblown

PreSat Microfiber



WIPERS

DRY WIPERS



M1 Polyester Cellulose Wipers

Suitable for use in ISO 5 and higher cleanrooms, this general-purpose wiper is highly absorbent and low linting.

Thomas No.	Model No.	Class	Edge Finish	Wiper Size	Packaging
Polyester Cellulose Wipers					
21A00P811	M1-C3044	ISO 5	Standard	4" x 4" (10.1cm x 10.1cm)	1200 ea/bag; 10 bags/case Flat-stacked
21A00P812	M1-C3066	ISO 5	Standard	6" x 6" (15.2cm x 15.2cm)	300 ea/bag; 10 bags/case Flat-stacked
21A00P813	M1-C3099	ISO 5	Standard	9" x 9" (23cm x 23cm)	300 ea/bag; 10 bags/case Flat-stacked
21A00P814	M1-C301212	ISO 5	Standard	12" x 12" (30.5cm x 30.5cm)	150 ea/bag; 10 bags/case Flat-stacked
21A00P815	M1-C301818	ISO 5	Standard	18" x 18" (45.7cm x 45.7cm)	75 ea/bag; 10 bags/case Flat-stacked
21A00P816	M1-C301224	ISO 5	Standard	12" x 24" (45.7cm x 45.7cm)	150/bag; 10 bags/case Flat-stacked

Purity Specifications	
Particles & Fibers	USL*
Particles >0.50um	< 80.0
Particles >5.0um	< 0.26
Fibers >100um	< 300

* x 10⁶ particles/m²
 *Particles: IEST-RP-CC004.3 Section 6.1.4
 Fibers: IEST-RP-CC004.3 Section 6.2.2
 (Orbital Shake Test)

Nonvolatile Residue	
Extractant	USL
IPA	<0.006 g/m ²
DI Water	<0.070 g/m ²

*IEST-RP-CC004.3 Section 7.1.2

Extractables	
Ion	USL
Sodium (Na ⁺)	<50 ppm
Potassium (K ⁺)	<30 ppm
Calcium (Ca ²⁺)	< 30 ppm
Chloride (Cl ⁻)	< 30 ppm
Magnesium (Mg ²⁺)	< 30 ppm

*IEST-RP-CC004.3 Section 7.1.2
 (Short Term Extraction)



M1 Lite Polyester Cellulose Wipers

This highly absorbent general-purpose wiper is low linting solution for fluid management and wiping in tight corners and crevices.

Thomas No.	Model No.	Edge Finish	Wiper Size	Packaging
Lite Polyester Cellulose Wipers				
21A00P817	M1-C30L44	Standard	4" x 4" (10.1cm x 10.1cm)	1200 ea/bag; 10 bags/case Flat-stacked
21A00P818	M1-C30L66	Standard	6" x 6" (15.2cm x 15.2cm)	300 ea/bag; 10 bags/case Flat-stacked
21A00P819	M1-C30L99	Standard	9" x 9" (23cm x 23cm)	300 ea/bag; 10 bags/case Flat-stacked
21A00P820	M1-C30L12	Standard	12" x 12" (30.5cm x 30.5cm)	150 ea/bag; 10 bags/case Flat-stacked
21A00P821	M1-C30L1818	Standard	18" x 18" (45.7cm x 45.7cm)	75 ea/bag; 10 bags/case Flat-stacked

Purity Specifications	
Particles & Fibers	Upper Limit*
Particles >0.50um	< 80.0
Particles >5.0um	< 0.26

* x 10⁶ particles/m²
 *Particles: IEST-RP-CC004.3 Section 6.1.4
 Fibers: IEST-RP-CC004.3 Section 6.2.2
 (Orbital Shake Test)

Nonvolatile Residue	
Extractant	Upper Limit*
IPA	<0.006 g/m ²
DI Water	<0.070 g/m ²

*IEST-RP-CC004.3 Section 7.1.2

Extractables	
Ion	Upper Limit*
Sodium (Na ⁺)	<50 ppm
Potassium (K ⁺)	<30 ppm
Calcium (Ca ²⁺)	< 30 ppm
Chloride (Cl ⁻)	< 30 ppm
Magnesium (Mg ²⁺)	< 30 ppm

*IEST-RP-CC004.3 Section 7.1.2
 (Short Term Extraction)



M1 Microfiber Wipers

Suitable for use in ISO 4 and higher cleanrooms, this woven microfiber is designed to deliver impressive particle and oily residue removal in your cleanroom environment.

- Laser cut edges to secure loose fibers when wiping
- Class 100 cleanroom laundered
- Double-bagged



Thomas No.	Model No.	Class	Edge Finish	Wiper Size	Packaging
Microfiber Wipers					
21A00P828	M1-MFSE99	ISO 4	Laser Seal	9" x 9" (23cm x 23cm)	100 ea/bag; 10 bags/case Flat-stacked
21A00P829	M1-MFSE12	ISO 4	Laser Seal	12" x 12" (30.5cm x 30.5cm)	100 ea/bag; 10 bags/case Flat-stacked

Purity Specifications	
Particles & Fibers	Upper Limit*
Particles >5.0um	< 8.5
Particles >0.5um	< 1.0
Fibers >100um	< 450

Nonvolatile Residue	
Extractant	Upper Limit*
IPA	<0.10 g/m ²
DI Water	<0.05 g/m ²

Extractables	
Ion	Upper Limit*
Sodium (Na ⁺)	< 0.20 ppm
Potassium (K ⁺)	< 0.10 ppm
Calcium (Ca ²⁺)	< 0.20 ppm
Chloride (Cl ⁻)	< 0.20 ppm
Magnesium (Mg ²⁺)	< 0.10 ppm

* x 10⁶ particles/m²
 *Particles: IEST-RP-CC004.3 Section 6.1.4
 Fibers: IEST-RP-CC004.3 Section 6.2.2
 (Orbital Shake Test)

*IEST-RP-CC004.3 Section 7.1.2

*IEST-RP-CC004.3 Section 7.1.2
 (Short Term Extraction)

M1 Polyester Wipers

Suitable for use in ISO 4 and higher cleanrooms, this knitted polyester woven is designed to deliver reliable performance for your cleanroom environment.

- Laser cut edges to secure loose fibers when wiping
- Class 100 cleanroom laundered
- Double-bagged



Thomas No.	Model No.	Class	Edge Finish	Wiper Size	Packaging
Polyester Wipers					
21A00P822	M1-340099LSSE	ISO 4	Laser Seal	9" x 9" (23cm x 23cm)	150 ea/bag; 10 bags/case Flat-stacked
21A00P823	M1-340012LSSE	ISO 4	Laser Seal	12" x 12" (30.5cm x 30.5cm)	150 ea/bag; 10 bags/case Flat-stacked

Purity Specifications		
Particles & Fibers	Upper Limit* Laser Sealed Edge	Upper Limit* Border Sealed Edge
Particles >0.5um	< 11.0	< 11.0
Particles >0.5um	< 0.8	< 0.8
Fibers >100um	< 400	< 400

* x 10⁶ particles/m²
 *Particles: IEST-RP-CC004.3 Section 6.1.4
 Fibers: IEST-RP-CC004.3 Section 6.2.2 (Orbital Shake Test)



DRY WIPERS



M1 Quilted Polyester Knit Wipers

Suitable for use in ISO 4 and higher cleanrooms, this double thickness polyester woven is quilted to deliver superior fluid management in your cleanroom environment.

- Laser cut edges to secure loose fibers when wiping
- Class 100 cleanroom laundered
- Double-bagged

Thomas No.	Model No.	Class	Edge Finish	Wiper Size	Packaging
Quilted Polyester Knit Wipers					
21A00P824	M1-QP44LSSE	ISO 4	Laser Seal	4" x 4" (10.1cm x 10.1cm)	300 ea/bag; 10 bags/case Bulk packed
21A00P825	M1-QP99LSSE	ISO 4	Laser Seal	9" x 9" (23cm x 23cm)	100 ea/bag; 10 bags/case Flat-stacked
21A00P826	M1-QP1212LSSE	ISO 4	Laser Seal	12" x 12" (30.5cm x 30.5cm)	100 ea/bag; 10 bags/case Flat-stacked; Bulk packed
21A00P827	M1-QP1818LSSE	ISO 4	Laser Seal	18" x 18" (45.7cm x 45.7cm)	40 ea/bag; 3 bags/case Flat-stacked

Purity Specifications	
Particles & Fibers	Upper Limit*
Particles >0.50um	< 8.5
Particles >0.3um	< 1.0
Fibers >100um	< 350

Nonvolatile Residue	
Extractant	Upper Limit*
IPA	<0.05 g/m ²
DI Water	<0.01 g/m ²

Extractables	
Ion	Upper Limit*
Sodium (Na ⁺)	< 0.20 ppm
Potassium (K ⁺)	< 0.10 ppm
Calcium (Ca ²⁺)	< 0.30 ppm
Chloride (Cl ⁻)	< 0.20 ppm
Magnesium (Mg ²⁺)	< 0.20 ppm

* x 10⁶ particles/m²
 *Particles: IEST-RP-CC004.3 Section 6.1.4
 Fibers: IEST-RP-CC004.3 Section 6.2.2
 (Orbital Shake Test)

*IEST-RP-CC004.3 Section 7.1.2

*IEST-RP-CC004.3 Section 7.1.2
 (Short Term Extraction)

M1 Wiper Selection Tool

STEP 1 Match the Environment	STEP 2 Choose the Material for Use		STEP 3 Choose Features			Thomas No.
			EDGE	SIZE	PACKAGE	
ISO 4+	Versatile Wiping	Polyester	Border	9 x 9	Stacked	M1-PBSE99
	High Volume Fluid Wiping	Quilted Polyester	Border	9 x 9	Stacked	M1-Q2PBSE99
ISO 5+	Versatile Wiping	Polyester	Laser	9 x 9	Stacked	21A00P822
		Polyester	Laser	12 x 12	Stacked	21A00P823
	High Volume Fluid Wiping	Quilted Polyester	Laser	4 x 4	Packed	21A00P824
		Quilted Polyester	Laser	9 x 9	Stacked	21A009825
		Quilted Polyester	Laser	12 x 12	Packed	21A00P826
		Quilted Polyester	Laser	18 x 18	Stacked	21A00P827
Particle/Oily Residue Removal	Microfiber	Laser	9 x 9	Stacked	21A00P828	
	Microfiber	Laser	12 x 12	Stacked	21A00P829	
ISO 6+	High Absorbency	Poly/Cellulose	Standard	4 x 4	Stacked	21A00P811
		Poly/Cellulose	Standard	6 x 6	Stacked	21A00P812
		Poly/Cellulose	Standard	9 x 9	Stacked	21A00P813
		Poly/Cellulose	Standard	12 x 12	Stacked	21A00P814
		Poly/Cellulose	Standard	18 x 18	Stacked	21A00P815
		Poly/Cellulose	Standard	24 x 24	Stacked	21A00P816
	Light Duty/Absorbent	Light Duty Poly/Cellulose	Standard	4 x 4	Stacked	21A00P817
		Light Duty Poly/Cellulose	Standard	6 x 6	Stacked	21A00P818
		Light Duty Poly/Cellulose	Standard	9 x 9	Stacked	21A00P819
		Light Duty Poly/Cellulose	Standard	12 x 12	Stacked	21A00P820
ISO 5+ PreSat	Apply IPA Evenly for Pass-thru Wiping	Polypropylene (70% IPA)	Standard	9 x 11	Resealable Pouch	21A00P830
	Apply IPA Evenly in Process Wiping	Microfiber (70% IPA)	Standard	9 x 9	Resealable Pouch	21A00P831

PRE-SAT WIPERS

M1 PreSat Meltblown Wipers

Suitable for use in ISO 5 and higher cleanrooms, this nonwoven meltblown wiper is precision saturated to maximize surface cleaning.

- Resealable closure
- 70% IPA / 30% DI Water



Thomas No.	Model No.	Class	Edge Finish	Wiper Size	Packaging
PreSat Meltblown Wipers					
21A00P830	M1-PSMBP70911	ISO 5	Laser Seal	9" x 11" (23cm x 30cm)	50 ea/pouch; 24 pouches/case Resealable closure

Purity Specifications	
Particles & Fibers	Upper Limit*
Particles >0.50um	< 20.0
Particles >0.3um	< 3.0
Fibers >100um	< 1000

* x 10⁶ particles/m²
 *Particles: IEST-RP-CC004.3 Section 6.1.4
 Fibers: IEST-RP-CC004.3 Section 6.2.2
 (Orbital Shake Test)

Nonvolatile Residue	
Extractant	Upper Limit*
IPA	<0.005 g/m ²
DI Water	<0.010 g/m ²

* IEST-RP-CC004.3 Section 7.1.2

Extractables	
Ion	Upper Limit*
Sodium (Na ⁺)	< 0.50 ppm
Potassium (K ⁺)	< 0.50 ppm
Calcium (Ca ²⁺)	<1.0 ppm
Chloride (Cl ⁻)	< 1.0 ppm
Magnesium (Mg ²⁺)	< 1.0 ppm

* IEST-RP-CC004.3 Section 7.1.2
 (Short Term Extraction)

M1 PreSat Microfiber Wipers

Suitable for use in ISO 5 and higher cleanrooms, this nonwoven wiper is ideal for efficient dust and oily residue removal.

- Resealable closure
- 70% IPA / 30% DI Water



Thomas No.	Model No.	Class	Edge Finish	Wiper Size	Packaging
PreSat Microfiber Wipers					
21A00P831	M1-PSMFI7099	ISO 5	Laser Seal	9" x 9" (23cm x 23cm)	30 ea/pouch; 24 pouches/case Resealable closure

Purity Specifications	
Particles & Fibers	Upper Limit*
Particles >0.50-100um	< 50.0
Fibers >100um	< 0.35

* x 10⁶ particles/m²
 *Particles: IEST-RP-CC004.3 Section 6.1.4
 Fibers: IEST-RP-CC004.3 Section 6.2.2
 (Orbital Shake Test)

Nonvolatile Residue	
Extractant	Upper Limit*
IPA	<0.05 g/m ²
DI Water	<0.03 g/m ²

* IEST-RP-CC004.3 Section 7.1.2

Extractables	
Ion	Upper Limit*
Sodium (Na ⁺)	< 20 ppm
Potassium (K ⁺)	< 30 ppm
Calcium (Ca ²⁺)	<30 ppm
Chloride (Cl ⁻)	< 20 ppm
Magnesium (Mg ²⁺)	< 30 ppm

* IEST-RP-CC004.3 Section 7.1.2
 (Short Term Extraction)



Slipcover
String & Loop

CLEANROOM MOPS

CLEANROOM MOPS

M1 Technology Mop Slipcover

M1 Slipcover, CR Processed, Polyester Knit, Stitched Elastic Mop Slipcovers, 5" x 16" x 2", Fits FS500 and 22-34 Mopheads

Thomas No.	Description	Case Qty.
Mop Slipcover		
M1-PTUMSC	M1 Technologies Slip Cover, 5" x 16" x 2", 25/Pack	250

M1 Technology Cleanroom Mops

Edgeless mops are made from strong, durable knitted polyester and eliminates contamination from breakage and deterioration common with cotton and rayon string mops. Made from a continuous tube of 100% polyester knitted fabric looped to form tubular mop strands that will not shed or break. Anti-static center band.

Available sterilized by gamma radiation, and can be sterilized by ETO and steam (autoclave) sterilization methods.

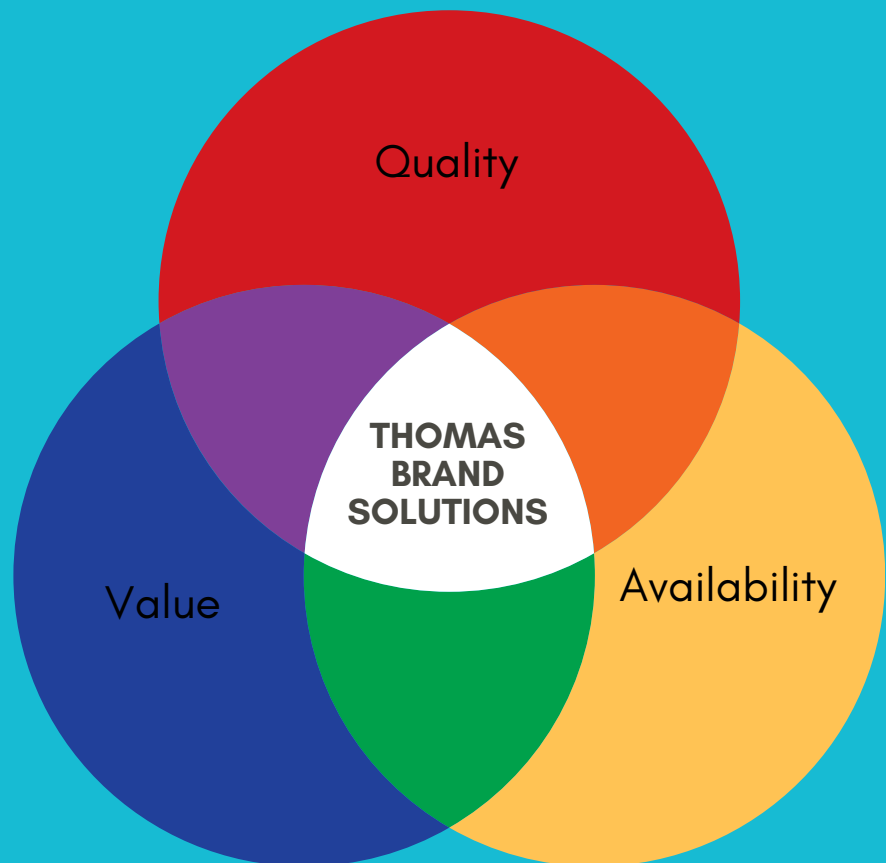
Class 10 Laundered and packaged.

Thomas No.	Description	Qty.
Cleanroom Mops		
M1-SEMOP3	M1 Cleanroom Mop, Loop Style, White	1 ea./20 cs.
M1-SLMOP	M1 Cleanroom Mop, 7" Yoke, 18" Strand Length	1 ea./20 cs.
M1-SLMOP20	M1 Cleanroom Mop, Cleanroom Processed Polyester Knit Yarn Mop, NR Synthetic Fabric, 7" Wide including Yoke, Non-Sterile	1 ea./20 cs.
M1-SLMOP3	M1 Cleanroom Mop, Class 10 Endless Tube, Special Polyester Knit, 5" wide, 18" Long Loop	1 ea./20 cs.

Unique Advantage: Thomas Brands

Join a legacy of scientific excellence! For over 120 years, we've been powering scientific breakthroughs across the globe. In the journey of progress, three timeless priorities consistently guide the selection of life science solutions: quality, value & availability. That's why Thomas Scientific built an essential portfolio designed exclusively for scientists, researchers, and laboratories worldwide.

Thomassci.com



A photograph of a hallway with two blue floor mats laid out on a light-colored floor. At the end of the hallway, there is a colorful, multi-colored rug. The image is overlaid with a semi-transparent blue filter.

Sticky & Tacky
Aluminum Frames

FLOOR MATS

FLOOR MATS & FRAMES

CE-Force® Sticky Floor Mats

CE-Force multi-layered clean-film full adhesive layers form mats that effectively capture dirt and dust from foot-traffic and equipment wheels before they enter the controlled environment. Each of the numbered layers of the mat peels off easily to reveal a new clean surface. Peel-off sheets eliminate the need for messy cleaning and resealable to make it easy to maintain a clean surface. Smooth, effective surface is not damaged by shoes, booties, or cart wheels. Numbered corner tabs for easy tracking of remaining sheets.

Perfect for cleanrooms, laboratories and any other dust/dirt free environment.

Aerospace, Biotechnology, Laser optics, Pharmaceutical

Packaging: 4 x 30 Sheets/Case



Thomas No.	Description	Case Qty.
Sticky Floor Mats		
1140X99	Sticky Mat, 18" x 36", Blue	4 x 30 Sheets
1140Y00	Sticky Mat, 18" x 36", Gray	4 x 30 Sheets
1140Y01	Sticky Mat, 18" x 36", White	4 x 30 Sheets
1140Y02	Sticky Mat, 18" x 45", Blue	4 x 30 Sheets
1140Y03	Sticky Mat, 18" x 45", Gray	4 x 30 Sheets
1140Y04	Sticky Mat, 18" x 45", White	4 x 30 Sheets
1140Y05	Sticky Mat, 24" x 36", Blue	4 x 30 Sheets
1140Y06	Sticky Mat, 24" x 36", Gray	4 x 30 Sheets
1140Y07	Sticky Mat, 24" x 36", White	4 x 30 Sheets
1140Y08	Sticky Mat, 26" x 45", Blue	4 x 30 Sheets
1140Y09	Sticky Mat, 26" x 45", Gray	4 x 30 Sheets
1140Y10	Sticky Mat, 26" x 45", White	4 x 30 Sheets
1140Y11	Sticky Mat, 36" x 36", Blue	4 x 30 Sheets
1140Y12	Sticky Mat, 36" x 36", Gray	4 x 30 Sheets
1140Y13	Sticky Mat, 36" x 36", White	4 x 30 Sheets
1140Y14	Sticky Mat, 36" x 45", Blue	4 x 30 Sheets
1140Y15	Sticky Mat, 36" x 45", Gray	4 x 30 Sheets
1140Y16	Sticky Mat, 36" x 45", White	4 x 30 Sheets
1140Y17	Sticky Mat, 36" x 60", Blue	4 x 30 Sheets
1140Y18	Sticky Mat, 36" x 60", Gray	4 x 30 Sheets
1140Y19	Sticky Mat, 36" x 60", White	4 x 30 Sheets

Technical Details	
Mat Composition	LDPE (Low Density Polyethylene)
Thickness/Sheet	0.035mm, 0.045mm, 0.05mm; Tolerance : ±8%
Tensile Strength	≥ 10MPa (Length ways) / ≥ 8MPa (Transverse)
Elongation	≥ 150% (Length ways) / ≥ 200% (Transverse)
Peel Adhesion	Medium Tack (MT): 400g/25mm (Top Layer); 600g/25mm (Bottom Layer) Note: High Tack (HT) options available upon request - please inquire.
Colors	Blue, Grey, White
Dimensions	18" x 36"; 18" x 45"; 24" x 36"; 26" x 45"; 36" x 36"; 36" x 45"; 36" x 60" Note: Dimension Tolerance is ±1.5%
Packaging	30 sheets/mat; 4 mats/case

Note: Data shown are typical values and should not be used as specifications.

CE-Force® Tacky/Sticky Mat Frame, Aluminum

Tacky mat frames provide an effective and uniform base for securing adhesive mats. The frames protect facility flooring and allow for a consistent footprint near any critical area utilizing peelable mats.



Thomas No.	Description	Case Qty.
CE-Force® Tacky/Sticky Mat Frames		
24A00A213	CE-Force Tacky/Sticky Mat Frame, 18" x 36"	1
24A00A214	CE-Force Tacky/Sticky Mat Frame, 18" x 45"	1
24A00A215	CE-Force Tacky/Sticky Mat Frame, 24" x 36"	1
24A00A216	CE-Force Tacky/Sticky Mat Frame, 26" x 45"	1
24A00A217	CE-Force Tacky/Sticky Mat Frame, 36" x 36"	1
24A00A218	CE-Force Tacky/Sticky Mat Frame, 36" x 60"	1



Paper

Clipboards

Sharpies

Binders

Sticky Notes

Notebooks

STATIONERY

STATIONERY

XtraClean "Class 10" Cleanroom Paper is latex-free and injected with a synthetic copolymer to substantially reduce particle generation. Ideal for writing, printing and photocopying in clean environments. Available in a variety of weights, sizes and colors.

XtraClean® 20# Cleanroom Paper

Thomas No.	Description	Case Qty.
Cleanroom Paper - 8.5" x 11"		
20A00R308	Cleanroom Paper, White	2500
20A00R309	Cleanroom Paper, Blue	2500
20A00R310	Cleanroom Paper, Canary	2500
20A00R311	Cleanroom Paper, Green	2500
20A00R312	Cleanroom Paper, Cream	2500
20A00R313	Cleanroom Paper, Goldenrod	2500
20A00R314	Cleanroom Paper, Grey	2500
20A00R315	Cleanroom Paper, Ivory	2500
20A00R316	Cleanroom Paper, Pink	2500
Cleanroom Paper - 8.5" x 14"		
20A00R317	Cleanroom Paper, White	1250
20A00R318	Cleanroom Paper, Blue	1250
20A00R319	Cleanroom Paper, Canary	1250
20A00R320	Cleanroom Paper, Green	1250
20A00R321	Cleanroom Paper, Cream	1250
20A00R322	Cleanroom Paper, Goldenrod	1250
20A00R323	Cleanroom Paper, Grey	1250
20A00R324	Cleanroom Paper, Ivory	1250
20A00R325	Cleanroom Paper, Pink	1250
Cleanroom Paper - 11" x 17"		
20A00R326	Cleanroom Paper, White	1250
20A00R327	Cleanroom Paper, Blue	1250
20A00R328	Cleanroom Paper, Canary	1250
20A00R329	Cleanroom Paper, Green	1250
20A00R330	Cleanroom Paper, Cream	1250
20A00R331	Cleanroom Paper, Goldenrod	1250
20A00R332	Cleanroom Paper, Grey	1250
20A00R333	Cleanroom Paper, Ivory	1250
20A00R334	Cleanroom Paper, Pink	1250



Performance Characteristics

Property	Test Method	Typical Value
Basis Weight	TM2 The Determination of Basis Weight	0.756 0.743
Caliper		0.710 0.694
Tear Strength Machine Direction Cross Direction	Elmendorf of Tear	26.6
Surface Resistivity	The determination of surface resistivity of thin, flat materials adapted from EOS-S11, 11-1993	21.4

Contamination Characteristics

Particles (0.5)	Particles released from paper under conditions of minimal stress	4.8 million particles / m
E.S.S		.018
Ions Sodium Ammonium Potassium (k+)	The determination of ions in paper by capillary ion analysis (CIA) Technique	85 ppm 0.390 uq / cm2 50 ppm 0.24 uq / cm .068 uq / cm2

Note: Data in this table represents typical analysis of these products. These are not specifications. CCR continually refines both its processes and its products. This is the most accurate representation of the typical properties of these products at the time of production.

XtraClean® 22# Cleanroom Paper

Thomas No.	Description	Case Qty.
Cleanroom Paper - 8.5" x 11"		
XC228511LF-WHT	Cleanroom Paper, White	2500
XC228511LF-BLU	Cleanroom Paper, Blue	2500
XC228511LF-GRN	Cleanroom Paper, Green	2500
XC228511LF-PNK	Cleanroom Paper, Pink	2500
XC228511LF-YLW	Cleanroom Paper, Canary Yellow	2500
XC228511LF-CRE	Cleanroom Paper, Cream	2500
XC228511LF-GOL	Cleanroom Paper, Goldenrod	2500
XC228511LF-GRY	Cleanroom Paper, Grey	2500
XC228511LF-IVO	Cleanroom Paper, Ivory	2500

Thomas No.	Description	Case Qty.
Cleanroom Paper - 11" x 17"		
XC221117LF-WHT	Cleanroom Paper, White	1250
XC221117LF-BLU	Cleanroom Paper, Blue	1250
XC221117LF-GRN	Cleanroom Paper, Green	1250
XC221117LF-PNK	Cleanroom Paper, Pink	1250
XC221117LF-YLW	Cleanroom Paper, Yellow	1250
XC221117LF-CRE	Cleanroom Paper, Cream	1250
XC221117LF-GOL	Cleanroom Paper, Goldenrod	1250
XC221117LF-GRY	Cleanroom Paper, Grey	1250
XC221117LF-IVO	Cleanroom Paper, Ivory	1250



STATIONERY



XtraClean® 28# Cleanroom Paper

Thomas No.	Description	Case Qty.
Cleanroom Paper - 8½" x 11"		
20A00R271	Cleanroom Paper, White	2500
20A00R272	Cleanroom Paper, Blue	2500
20A00R273	Cleanroom Paper, Canary	2500
20A00R274	Cleanroom Paper, Green	2500
20A00R275	Cleanroom Paper, Cream	2500
20A00R276	Cleanroom Paper, Goldenrod	2500
20A00R277	Cleanroom Paper, Grey	2500
20A00R278	Cleanroom Paper, Ivory	2500
20A00R279	Cleanroom Paper, Pink	2500

Thomas No.	Description	Case Qty.
Cleanroom Paper - 8.5" x 14"		
20A00R280	Cleanroom Paper, White	1250
20A00R281	Cleanroom Paper, Blue	1250
20A00R282	Cleanroom Paper, Canary	1250
20A00R283	Cleanroom Paper, Green	1250
20A00R284	Cleanroom Paper, Cream	1250
20A00R285	Cleanroom Paper, Goldenrod	1250
20A00R286	Cleanroom Paper, Grey	1250
20A00R287	Cleanroom Paper, Ivory	1250
20A00R288	Cleanroom Paper, Pink	1250
Cleanroom Paper - 11" x 17"		
20A00R289	Cleanroom Paper, White	1250
20A00R290	Cleanroom Paper, Blue	1250
20A00R291	Cleanroom Paper, Canary	1250
20A00R292	Cleanroom Paper, Green	1250
20A00R293	Cleanroom Paper, Cream	1250
20A00R294	Cleanroom Paper, Goldenrod	1250
20A00R295	Cleanroom Paper, Grey	1250
20A00R296	Cleanroom Paper, Ivory	1250
20A00R297	Cleanroom Paper, Pink	1250



XtraClean® Cleanroom Clipboard, White

Cleanroom 1/4" thick clipboard features a non-particulating poly clip with spring. Long lasting and very durable. For all cleanroom applications.

Thomas No.	Description	Case Qty.
Cleanroom Clipboard		
20A00R302	Clipboard, White	10

XtraClean® Cleanroom Sharpie, Green

Durable tip for precise writing in a cleanroom environment where the prevention of chemical exportation and particle contamination is critical.

Non-toxic, high density polyethylene construction. Waterproof, smear and fade-resistant. Archival quality.



Thomas No.	Description	Qty.
Cleanroom Sharpies		
20A00R303	Cleanroom Sharpie, Green	12/pk.
XCCRFTM-RED	Cleanroom Sharpie, Red	12/pk.
XCCRFTM-BLU	Cleanroom Sharpie, Blue	12/pk.
XCCRFTM-BLK	Cleanroom Sharpie, Black	12/pk.

XtraClean® Poly Binder, 1"

Constructed of white dissipative 75 gauge high density polyethylene, transparent poly pockets on front and spine allow identification of sheet insertions.

No particulating cardboard in construction; 3 poly rings.



Thomas No.	Description	Case Qty.
Cleanroom Poly Binder		
XCBIND-PCM1	1" Poly Binder	1 ea./10 cs.
XCBIND-PCM2	2" Poly Binder	1 ea./10 cs.
XCBIND-PCM3	3" Poly Binder	1 ea./10 cs.

XtraClean® Cleanroom Tabbed Dividers, 8.5" x 11"

1/5th cut blank tabs for use in three hole drilled 8.5" x 11" cleanroom binders.

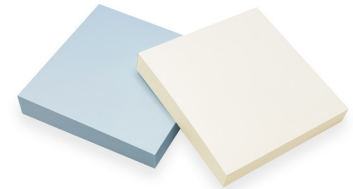
Manufactured from low particle 90# cleanroom stock.



Thomas No.	Description	Qty.
Cleanroom Binder		
20A00R304	Cleanroom Binders, 8.5" x 11"	5/pk.

XtraClean® Sticky Notes, 3" x 3"

Cleanroom sticky notes are the answer when all you want to leave behind is a message. Special repositionable adhesive backing.



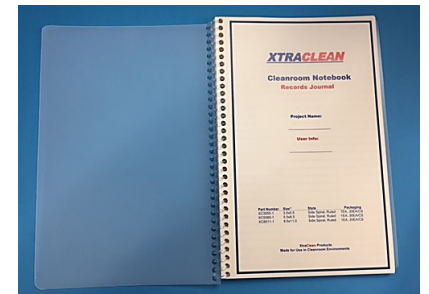
Thomas No.	Description	Case Qty.
Cleanroom 28# Sticky Notes		
20A00R339	3" x 3" Blue Sticky Notes	24
20A00R340	3" x 3" Blue Sticky Notes, Individually wrapped	24
XC33PINW-24PK	3" x 3" White Sticky Notes	24
XC33PINW-1PK	3" x 3" White Sticky Notes, Individually wrapped	24

XtraClean® Latex Cleanroom Notebooks

Side spiraled cleanroom notebooks are used to make notes and record events of daily operations. Printed with college rule lines or engineering grids on all pages. Spiral notebooks include semi-transparent, high density polyethylene covers. Manufactured to cleanroom standards from 22# latex-impregnated bond and assembled and packaged in an ISO Class 5 cleanroom, these notebooks are designed to keep particle burdens to a minimum.

Includes 100 pages (50 sheets).

Each notebook is individually shrink-wrapped and packaged in a polyethylene bag.



Thomas No.	Description	Case Qty.
Cleanroom Notebooks		
XC3555	Latex Notebooks, Size 3½" x 5½"	30
XC5585	Latex Notebooks, Size 5½" x 8½"	30
XC5585GRID	Latex Notebooks, Grid Paper, Size 5½" x 8½"	30
XC8511	Latex Notebooks, Size 8½" x 11"	20
XC8511GRID	Latex Notebooks, Grid Paper, Size 8½" x 11"	20



STATIONERY



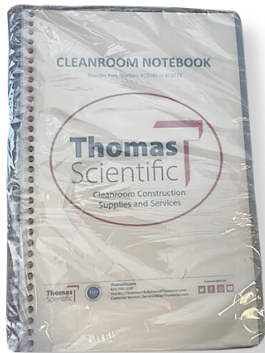
XtraClean® Cleanroom Latex & Latex-Free Notebook, College Rule

Designed for writing in cleanroom environments, where the prevention of chemical exportation and particle contamination is critical cleanroom stock.

Semi-transparent, high density polyethylene covers.

Includes 100 pages (50 sheets).

Thomas No.	Description	Case Qty.
Cleanroom Latex Notebook, College Rule		
20A00R341	Latex Notebooks, College Rule, a-4 size (8.27" x 11.69")	20
20A00R342	Latex Notebooks, College Rule, a-5 size (5.8" x 8.3")	20
Cleanroom Latex-Free Notebook, College Rule		
20A00R343	Latex-Free Notebook, College Rule, 8.5" x 11"	20
20A00R344	Latex-Free Notebook, College Rule, 5.5" x 8.5"	30
20A00R345	Latex-Free Notebook, College Rule, 3" x 5"	30
20A00R346	Latex-Free Notebook, College Rule, a-4 size (8.27" x 11.69")	20
20A00R347	Latex-Free Notebook, College Rule, a-5 size (5.8" x 8.3")	30



XtraClean® Cleanbuild Construction Cleanroom Notebook

Side spiraled and ruled cleanroom notebooks from XtraClean are used to make notes and record events of daily operations. XtraClean notebooks are manufactured to cleanroom standards from materials with unique properties to keep particle burden to a minimum. XtraClean notebook covers are constructed of polyethylene and can be written on. Each notebook is poly-bagged for maximum cleanliness.

Designed for writing in clean room environments, where the prevention of chemical exportation and particle contamination is critical

Meets all standards for Class 10 (ISO 4)

Thomas No.	Description	Case Qty.
Cleanbuild Construction Cleanroom Notebooks, College Rule		
XC5585-CB	Notebook size 5.5" x 8.5"	1 ea./30 cs.
XC8511-CB	Latex Notebook- college rule or engineering grid. 8.5" x 11", 100 pages, 50 sheets, semi-transparent, high density polyethylene covers	1 ea./20 cs.
XC3555-CB	Latex Notebook – college rule (only). 3" x 5", 100 pages, 50 sheets, semi-transparent, high density polyethylene covers	1 ea./30 cs.





LDPE

Anti-Static

Nylon

CLEAN PACKAGING

CLEAN PACKAGING

LDPE



CE-Force® Cleanroom .006" LDPE Clear Open Top Bags

LDPE 6 mil open top clean bags are made in a cleanroom from the finest Barefoot resin certified to meet IEST CC 1246E cleanliness levels. CE-Force packaging combines strength and cleanliness to create a protective barrier with lot traceability back to the raw material.

Level 100 Clean (ISO 5). Clean packaged with 100/inner bag.

Tubing and alternate thickness options available.

Inquire about LPC & NVR testing.

Thomas No.	Description	Qty.
Cleanroom .006" LDPE Clear Open Top Bags		
24A00H240	Clear Open Top Bags, 2" x 3" x .006"	100/pk./1000/cs.
23A00X106	Clear Open Top Bags, 3" x 4" x .006"	100/pk./1000/cs.
23A00X107	Clear Open Top Bags, 4" x 4" x .006"	100/pk./1000/cs.
23A00X108	Clear Open Top Bags, 4" x 6" x .006"	100/pk./1000/cs.
23A00X109	Clear Open Top Bags, 6" x 6" x .006"	100/pk./1000/cs.
23A00X110	Clear Open Top Bags, 6" x 8" x .006"	100/pk./1000/cs.
23A00X111	Clear Open Top Bags, 8" x 8" x .006"	100/pk./1000/cs.
23A00X112	Clear Open Top Bags, 8" x 10" x .006"	100/pk./1000/cs.
24A00H241	Clear Open Top Bags, 10" x 12" x .006"	100/pk./1000/cs.

Thomas No.	Description	Qty.
Cleanroom .006" LDPE Clear Open Top Bags		
24A00H242	Clear Open Top Bags, 12" x 12" x .006"	100/pk./1000/cs.
24A00H243	Clear Open Top Bags, 12" x 15" x .006"	100/pk./1000/cs.
24A00H244	Clear Open Top Bags, 12" x 16" x .006"	100/pk./1000/cs.
23A00X117	Clear Open Top Bags, 12" x 18" x .006"	100/pk./1000/cs.
24A00H811	Clear Open Top Bags, 16" x 18" x .006"	100/pk./1000/cs.
24A00H246	Clear Open Top Bags, 18" x 24" x .006"	100/pk./1000/cs.
24A00H247	Clear Open Top Bags, 20" x 20" x .006"	100/pk./1000/cs.
24A00H248	Clear Open Top Bags, 24" x 36" x .006"	100/pk./1000/cs.



CE-Force® Cleanroom .004" LDPE Clear Open Top Bags

LDPE 4 mil open top clean bags are made in a cleanroom from the finest Barefoot resin certified to meet IEST CC 1246E cleanliness levels. CE-Force packaging combines strength and cleanliness to create a protective barrier with lot traceability back to the raw material.

Level 100 Clean (ISO 5). Clean packaged with 100/inner bag.

Tubing and alternate thickness options available.

Inquire about LPC & NVR testing.

Thomas No.	Description	Qty.
Cleanroom .004" LDPE Clear Open Top Bags		
23A00X122	Clear Open Top Bags, 3" x 4" x .004"	100/pk./1000/cs.
23A00X123	Clear Open Top Bags, 3" x 8" x .004"	100/pk./1000/cs.
23A00X124	Clear Open Top Bags, 4" x 4" x .004"	100/pk./1000/cs.
23A00X125	Clear Open Top Bags, 4" x 6" x .004"	100/pk./1000/cs.
23A00X126	Clear Open Top Bags, 5" x 10" x .004"	100/pk./1000/cs.
23A00X127	Clear Open Top Bags, 6" x 6" x .004"	100/pk./1000/cs.
23A00X128	Clear Open Top Bags, 6" x 8" x .004"	100/pk./1000/cs.
23A00X129	Clear Open Top Bags, 6" x 10" x .004"	100/pk./1000/cs.
23A00X130	Clear Open Top Bags, 8" x 8" x .004"	100/pk./1000/cs.
23A00X131	Clear Open Top Bags, 8" x 10" x .004"	100/pk./1000/cs.

Thomas No.	Description	Qty.
Cleanroom .004" LDPE Clear Open Top Bags		
23A00X132	Clear Open Top Bags, 8" x 12" x .004"	100/pk./1000/cs.
23A00X133	Clear Open Top Bags, 10" x 12" x .004"	100/pk./1000/cs.
23A00X134	Clear Open Top Bags, 12" x 12" x .004"	100/pk./1000/cs.
23A00X135	Clear Open Top Bags, 12" x 14" x .004"	100/pk./1000/cs.
24A00H249	Clear Open Top Bags, 12" x 18" x .004"	100/pk./500/cs.
24A00H250	Clear Open Top Bags, 16" x 16" x .004"	100/pk./500/cs.
24A00H251	Clear Open Top Bags, 16" x 18" x .004"	100/pk./500/cs.
24A00H812	Clear Open Top Bags, 18" x 24" x .004"	50/pk.
24A00H253	Clear Open Top Bags, 26" x 30" x .004"	20/pk./100/cs.



CLEAN PACKAGING

LDPE

CE-Force® Cleanroom .006" LDPE Clear Tubing

LDPE 6 mil Rollstock Tubing is made in a cleanroom from the finest Barefoot resin certified to meet IEST CC 1246E cleanliness levels. CE-Force packaging combines strength and cleanliness to create a protective barrier with lot traceability back to the raw material.

Level 100 Clean (ISO 5). 500' rolls (largest sizes 205')

Bags and alternate thickness options available. Inquire to add LPC & NVR testing.



Thomas No.	Description	Qty.
Cleanroom .006" LDPE Clear Tubing		
23A00X141	Clear Tubing, 2" x 500' x .006"	500/roll
23A00X142	Clear Tubing, 3" x 500' x .006"	500/roll
23A00X143	Clear Tubing, 4" x 500' x .006"	500/roll
23A00X144	Clear Tubing, 5" x 500' x .006"	500/roll
23A00X145	Clear Tubing, 6" x 500' x .006"	500/roll
23A00X146	Clear Tubing, 8" x 500' x .006"	500/roll
23A00X147	Clear Tubing, 10" x 500' x .006"	500/roll
23A00X148	Clear Tubing, 12" x 500' x .006"	500/roll
23A00X149	Clear Tubing, 14" x 500' x .006"	500/roll
23A00X150	Clear Tubing, 16" x 500' x .006"	500/roll

Thomas No.	Description	Qty.
Cleanroom .006" LDPE Clear Tubing		
23A00X151	Clear Tubing, 18" x 500' x .006"	500/roll
23A00X152	Clear Tubing, 20" x 500' x .006"	500/roll
23A00X153	Clear Tubing, 22" x 500' x .006"	500/roll
23A00X154	Clear Tubing, 24" x 250' x .006"	500/roll
23A00X155	Clear Tubing, 24" x 500' x .006"	500/roll
23A00X156	Clear Tubing, 32" x 250' x .006"	250/roll
23A00X157	Clear Tubing, 24" x 36" x .006"	500/roll
23A00X158	Clear Tubing, 36" x 250' x .006"	500/roll
23A00X159	Clear Tubing, 36" x 500' x .006"	500/roll

CE-Force® Cleanroom .004" LDPE Clear Tubing

LDPE 4 mil Rollstock Tubing is made in a cleanroom from the finest Barefoot resin certified to meet IEST CC 1246E cleanliness levels. CE-Force packaging combines strength and cleanliness to create a protective barrier with lot traceability back to the raw material.

Level 100 Clean (ISO 5). 500' rolls (largest sizes 205')

Bags and alternate thickness options available. Inquire to add LPC & NVR testing.



Thomas No.	Description	Qty.
Cleanroom .004" LDPE Clear Tubing		
23A00X160	Clear Tubing, 2" x 500' x .004"	500/roll
23A00X161	Clear Tubing, 3" x 500' x .004"	500/roll
23A00X162	Clear Tubing, 4" x 500' x .004"	500/roll
23A00X163	Clear Tubing, 5" x 500' x .004"	500/roll
23A00X164	Clear Tubing, 6" x 500' x .004"	500/roll
23A00X165	Clear Tubing, 8" x 500' x .004"	500/roll
23A00X166	Clear Tubing, 10" x 500' x .004"	500/roll

Thomas No.	Description	Qty.
Cleanroom .004" LDPE Clear Tubing		
23A00X167	Clear Tubing, 12" x 500' x .004"	500/roll
23A00X168	Clear Tubing, 16" x 500' x .004"	500/roll
23A00X169	Clear Tubing, 18" x 500' x .004"	500/roll
23A00X170	Clear Tubing, 20" x 500' x .004"	500/roll
23A00X171	Clear Tubing, 22" x 500' x .004"	500/roll
23A00X172	Clear Tubing, 24" x 500' x .004"	250/roll
23A00X173	Clear Tubing, 36" x 500' x .004"	500/roll

CLEAN PACKAGING

ANTI-STATIC



CE-Force® Cleanroom .006" LDPE Anti-static Pink Poly Bags

Anti-static LDPE 6 mil bags are made in a cleanroom from the finest Barefoot resin certified to meet IEST CC 1246E cleanliness levels. CE-Force packaging combines strength and cleanliness to create a protective barrier with lot traceability back to the raw material.

Level 100 Clean (ISO 5). Pink with anti-static properties.

Anti-static rollstock tubing also available. Inquire to add LPC & NVR testing.

Thomas No.	Description	Qty.
Cleanroom .006" LDPE Pink Anti-static Bags		
23A00X174	Pink Anti-static Bags, 3" x 4" x .006"	100/pk./1000/cs.
23A00X175	Pink Anti-static Bags, 4" x 6" x .006"	100/pk./1000/cs.
23A00X176	Pink Anti-static Bags, 6" x 8" x .006"	100/pk./1000/cs.
23A00X177	Pink Anti-static Bags, 6" x 10" x .006"	100/pk./1000/cs.
23A00X178	Pink Anti-static Bags, 8" x 10" x .006"	100/pk./1000/cs.
23A00X179	Pink Anti-static Bags, 10" x 12" x .006"	100/pk./1000/cs.
24A00H254	Pink Anti-static Bags, 12" x 18" x .006"	100/pk./500/cs.
24A00H255	Pink Anti-static Bags, 24" x 36" x .006"	100/pk./1000/cs.



CE-Force® Cleanroom .006" LDPE Anti-static Pink Tubing

Anti-static LDPE 6 mil Rollstock is made in a cleanroom from the finest Barefoot resin certified to meet IEST CC 1246E cleanliness levels. CE-Force packaging combines strength and cleanliness to create a protective barrier with lot traceability back to the raw material.

Level 100 Clean (ISO 5). Pink with anti-static properties.

Anti-static bags also available. Inquire to add LPC & NVR testing.

Thomas No.	Description	Qty.
Cleanroom .006" LDPE Pink Anti-static Tubing		
23A00X182	Pink Anti-static Tubing, 2" x 500' x .006"	500/roll
23A00X183	Pink Anti-static Tubing, 4" x 500' x .006"	500/roll
23A00X184	Pink Anti-static Tubing, 6" x 500' x .006"	500/roll
23A00X185	Pink Anti-static Tubing, 8" x 500' x .006"	500/roll
23A00X186	Pink Anti-static Tubing, 10" x 500' x .006"	500/roll
23A00X187	Pink Anti-static Tubing, 12" x 500' x .006"	500/roll
23A00X188	Pink Anti-static Tubing, 18" x 500' x .006"	500/roll
23A00X189	Pink Anti-static Tubing, 24" x 500' x .006"	500/roll
23A00X190	Pink Anti-static Tubing, 36" x 500' x .006"	500/roll
23A00X191	Pink Anti-static Tubing, 48" x 250' x .006"	500/roll



CLEAN PACKAGING

NYLON

CE-Force® Cleanroom .002" Nylon Clear Bags

Nylon 2 mil bags are made in a cleanroom from the finest Barefoot resin certified to meet IEST CC 1246E cleanliness levels. CE-Force packaging combines strength and cleanliness to create a protective barrier with lot traceability back to the raw material. Bottom seal.

Level 50 Clean.

Nylon rollstock tubing also available. Inquire to add LPC & NVR testing.



Thomas No.	Description	Qty.
Cleanroom .002" Nylon Clear Bags		
23A00X192	Nylon Clear Bags, 2" x 3" x .002"	100/pk./1000/cs.
23A00X193	Nylon Clear Bags, 3" x 4" x .002"	100/pk./1000/cs.
23A00X194	Nylon Clear Bags, 4" x 4" x .002"	100/pk./1000/cs.
23A00X195	Nylon Clear Bags, 4" x 6" x .002"	100/pk./1000/cs.
23A00X196	Nylon Clear Bags, 6" x 6" x .002"	100/pk./1000/cs.
23A00X197	Nylon Clear Bags, 6" x 8" x .002"	100/pk./1000/cs.
23A00X198	Nylon Clear Bags, 8" x 10" x .002"	100/pk./1000/cs.
23A00X199	Nylon Clear Bags, 8" x 12" x .002"	100/pk./1000/cs.

Thomas No.	Description	Qty.
Cleanroom .002" Nylon Clear Bags		
23A00X200	Nylon Clear Bags, 10" x 12" x .002"	100/pk./1000/cs.
23A00X201	Nylon Clear Bags, 12" x 14" x .002"	100/pk./1000/cs.
23A00X202	Nylon Clear Bags, 12" x 16" x .002"	100/pk./1000/cs.
24A00H256	Nylon Clear Bags, 16" x 18" x .002"	100/pk./500/cs.
24A00H257	Nylon Clear Bags, 20" x 20" x .002"	100/pk./500/cs.
24A00H258	Nylon Clear Bags, 22" x 22" x .002"	100/pk./500/cs.
24A00H259	Nylon Clear Bags, 24" x 36" x .002"	100/pk./500/cs.

CE-Force® Cleanroom .002" Nylon Clear Tubing

Nylon 2 mil Rollstock Tubing is made in a cleanroom from the finest Barefoot resin certified to meet IEST CC 1246E cleanliness levels. CE-Force packaging combines strength and cleanliness to create a protective barrier with lot traceability back to the raw material.

Level 50 Clean.

Nylon bags also available. Inquire to add LPC & NVR testing.



Thomas No.	Description	Qty.
Cleanroom .002" Nylon Clear Tubing		
23A00X207	Nylon Clear Tubing, 2" x 1000' x .002"	1000/Roll
23A00X208	Nylon Clear Tubing, 3" x 1000' x .002"	1000/Roll
23A00X209	Nylon Clear Tubing, 4" x 1000' x .002"	1000/Roll
23A00X210	Nylon Clear Tubing, 5" x 1000' x .002"	1000/Roll
23A00X211	Nylon Clear Tubing, 6" x 1000' x .002"	1000/Roll
23A00X212	Nylon Clear Tubing, 8" x 1000' x .002"	1000/Roll
23A00X213	Nylon Clear Tubing, 9" x 1000' x .002"	1000/Roll
23A00X214	Nylon Clear Tubing, 10" x 1000' x .002"	1000/Roll
23A00X215	Nylon Clear Tubing, 12" x 1000' x .002"	1000/Roll
23A00X216	Nylon Clear Tubing, 14" x 1000' x .002"	1000/Roll

Thomas No.	Description	Qty.
Cleanroom .002" Nylon Clear Tubing		
23A00X217	Nylon Clear Tubing, 15" x 1000' x .002"	1000/Roll
23A00X218	Nylon Clear Tubing, 16" x 1000' x .002"	1000/Roll
23A00X219	Nylon Clear Tubing, 18" x 1000' x .002"	1000/Roll
23A00X220	Nylon Clear Tubing, 20" x 1000' x .002"	1000/Roll
23A00X221	Nylon Clear Tubing, 22" x 1000' x .002"	1000/Roll
23A00X222	Nylon Clear Tubing, 24" x 1000' x .002"	1000/Roll
23A00X223	Nylon Clear Tubing, 26" x 1000' x .002"	1000/Roll
23A00X224	Nylon Clear Tubing, 30" x 500' x .002"	1000/Roll
23A00X225	Nylon Clear Tubing, 36" x 500' x .002"	1000/Roll



Backpacks

Sling Bags

ID Holders

CLEANROOM ACCESSORIES



CLEANROOM ACCESSORIES

CE-Force® Cleanroom Backpack & Sling Bag

Backpack features anti-static PVC film that protects important data from electricity. Transport design allows easy check of contents. Store laptops, tablets, and more.

The Sling Bag is anti-static PVC and is ideal for smaller articles.

Thomas No.	Description	Qty.
Cleanroom Backpack & Sling Bag		
23A00X425	Backpack Clear PVC Anti-Static 1mm Grid	1/ea.
23A00X426	Sling Bag Clear PVC Anti-Static 1mm Grid	1/ea.



XtraClean® Poly Badge ID Holders

“Poly Badge Clips” – The most economical solution for displaying ID badges. Our Poly Badge Clips contain no metal. These are perfect for hospitals or where metal can present a problem. These are also a great for those corporations wanting to visually identify different divisions, departments, titles, duties, or access categories.

“Class 10” – Cleanroom Badge Clips

These Clips are double- bagged to “Class 10” specification, for use in critical environments.



Thomas No.	Description	Qty.
XtraClean® Poly Badge ID Holders		
20A00R298	Badge Clips	50/cs.





CONNECT WITH US.



customerservice@thomassci.com



833.544.7447



thomassci.com



@thomassci



Sales Rep

Phone

Email

